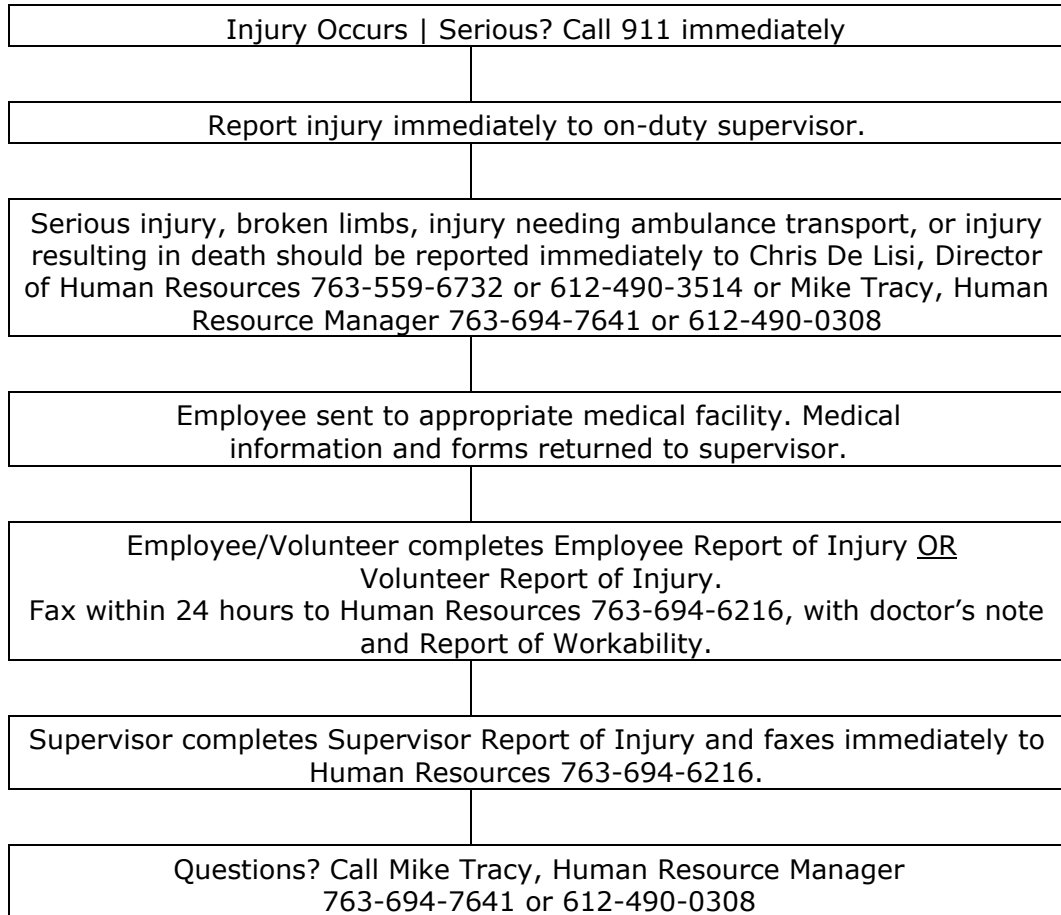




Work Related Injuries Flow Chart



The Park District has established a relationship with **Health Partners Occupational Medicine** for work related injury care. Please utilize the HealthPartners West Clinic in St. Louis Park. Supervisors should call for an appointment.

Health Partners Occupational Medicine Clinics | 952-883-6999

Clinic Hours | 8:00 a.m. to 5:00 p.m. Monday through Friday
During Clinic Hours, **Select Option 3** - West Clinic in St. Louis Park
During Non-Clinic Hours, **Select Option 5** - Urgent Care

▶ **West Clinic**
Three Rivers' Primary Clinic
1665 Utica Ave S, Ste 100
Saint Louis Park, MN 55416

▶ **Riverside Clinic**
2220 Riverside Ave S
Minneapolis, MN 55454

▶ **St. Paul Clinic**
205 S Wabasha St
Saint Paul, MN 55107